

## Appendix H

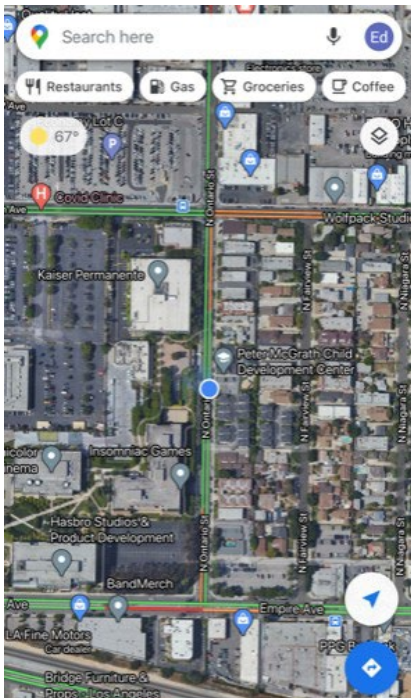
### Noise Data

---

<b>Site Number:</b> 1
<b>Recorded By:</b> Eddie Torres
<b>Job Number:</b> 180918
<b>Date:</b> February 25, 2021
<b>Time:</b> 11:13 am
<b>Location:</b> In front of residence located at 2298 N. Ontario Street
<b>Source of Peak Noise:</b> traffic noise

Equipment						
Category	Type	Vendor	Model	Serial No.	Cert. Date	Note
Sound	Sound Level Meter	Brüel & Kjær	2250	3011133	04/08/2019	
	Microphone	Brüel & Kjær	4189	3086765	04/08/2019	
	Preamp	Brüel & Kjær	ZC 0032	25380	04/08/2019	
	Calibrator	Brüel & Kjær	4231	2545667	04/08/2019	
Weather Data						
Est.	Duration: 10 minutes			Sky: Clear		
	Note: dBA Offset = 0.01			Sensor Height (ft): 5 ft		
	Wind Ave Speed (mph / m/s)		Temperature (degrees Fahrenheit)		Barometer Pressure (inches)	
	1.8		67		26.3	

**Photo of Measurement Location**





2250

Instrument:		2250
Application:		BZ7225 Version 4.7.4
Start Time:		02/25/2021 11:13:59
End Time:		02/25/2021 11:23:59
Elapsed Time:		00:10:00
Bandwidth:		1/3-octave
Max Input Level:		142.17

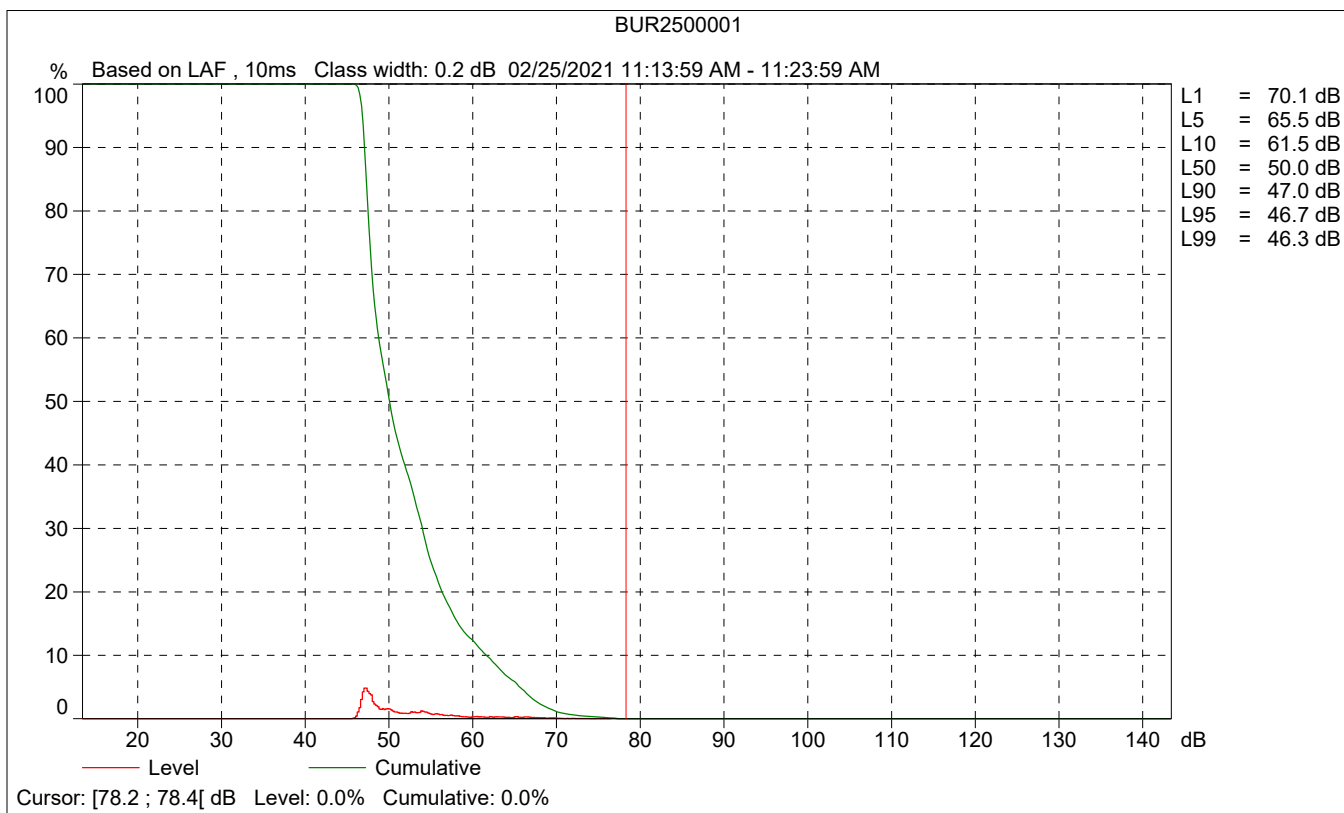
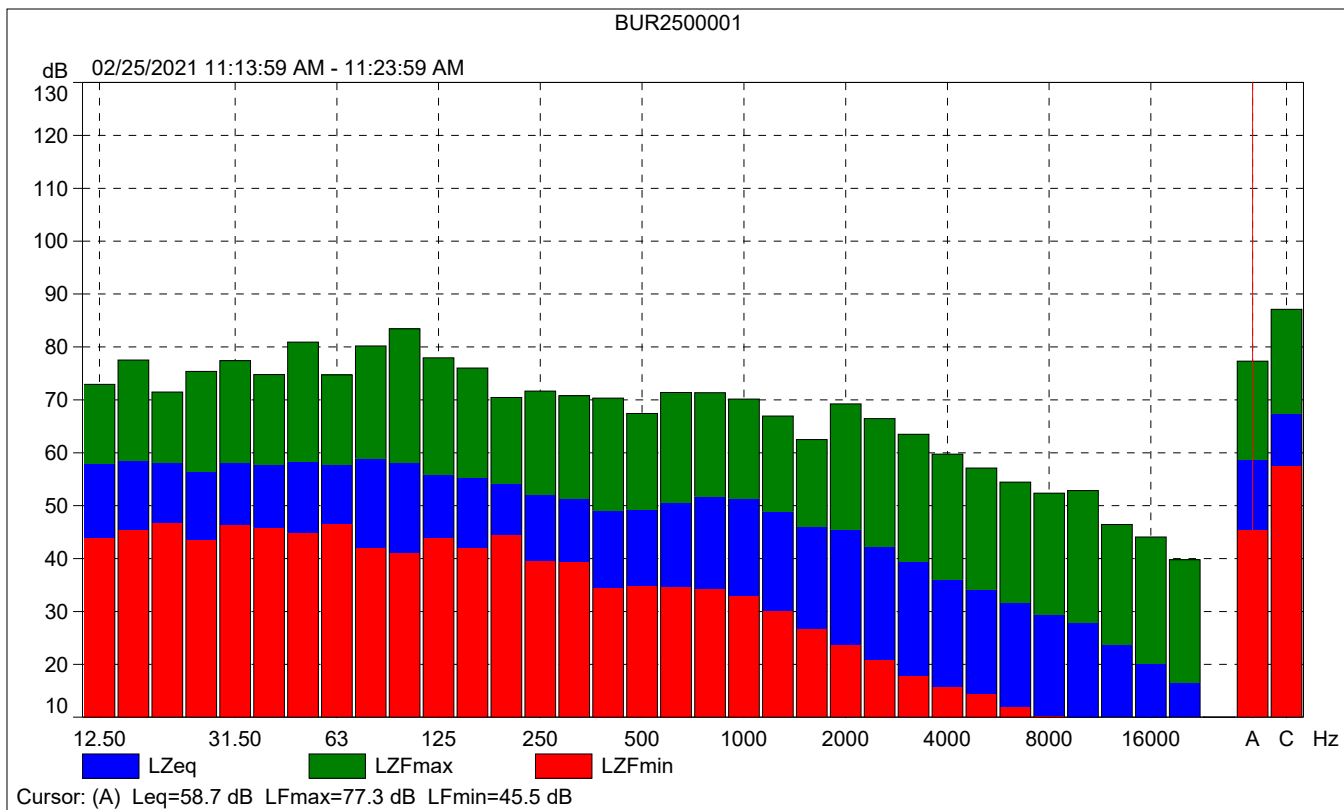
	Time	Frequency
Broadband (excl. Peak):	FSI	AC
Broadband Peak:		C
Spectrum:	FS	Z

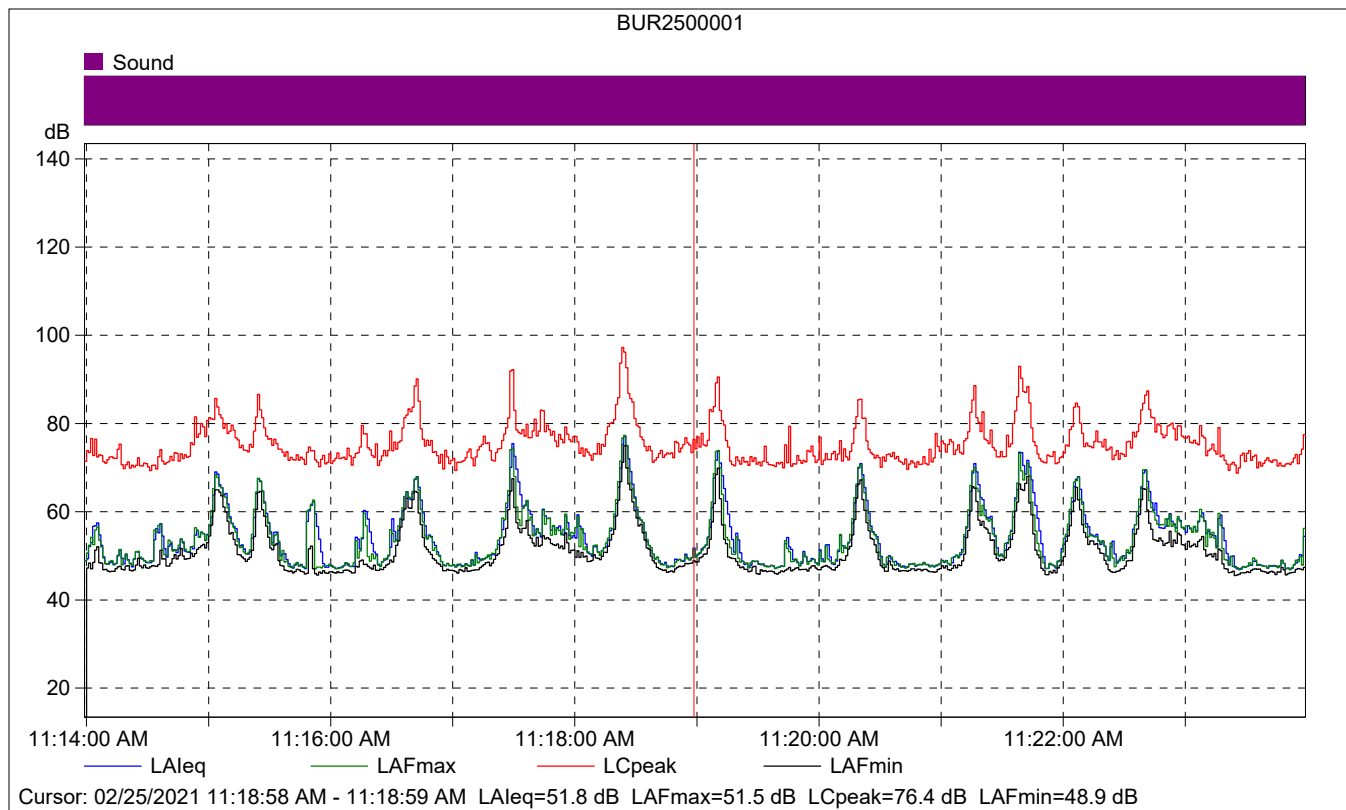
Instrument Serial Number:		3011133
Microphone Serial Number:		3086765
Input:		Top Socket
Windscreen Correction:		UA-1650
Sound Field Correction:		Free-field

Calibration Time:		01/14/2021 08:34:02
Calibration Type:		External reference
Sensitivity:		43.354082852602 mV/Pa

BUR2500001

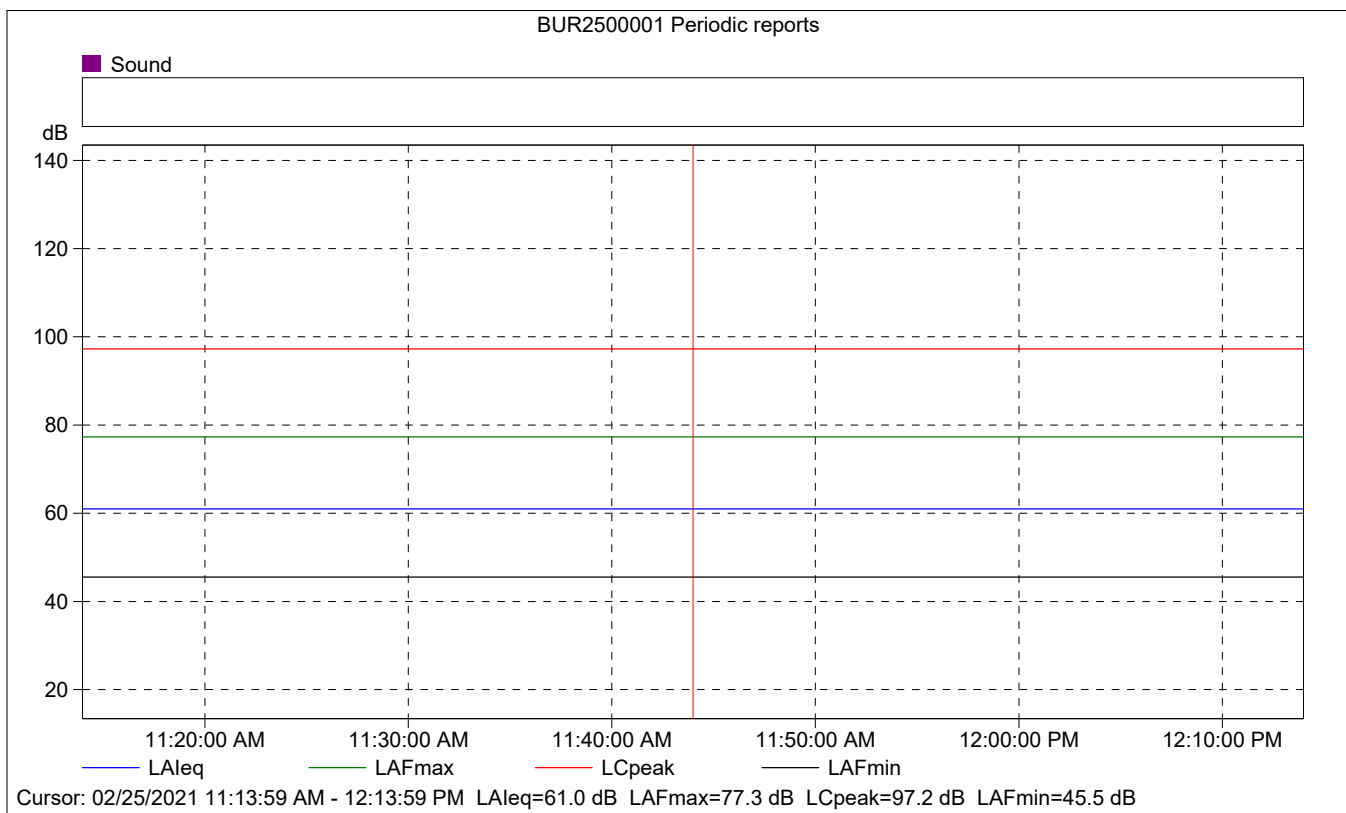
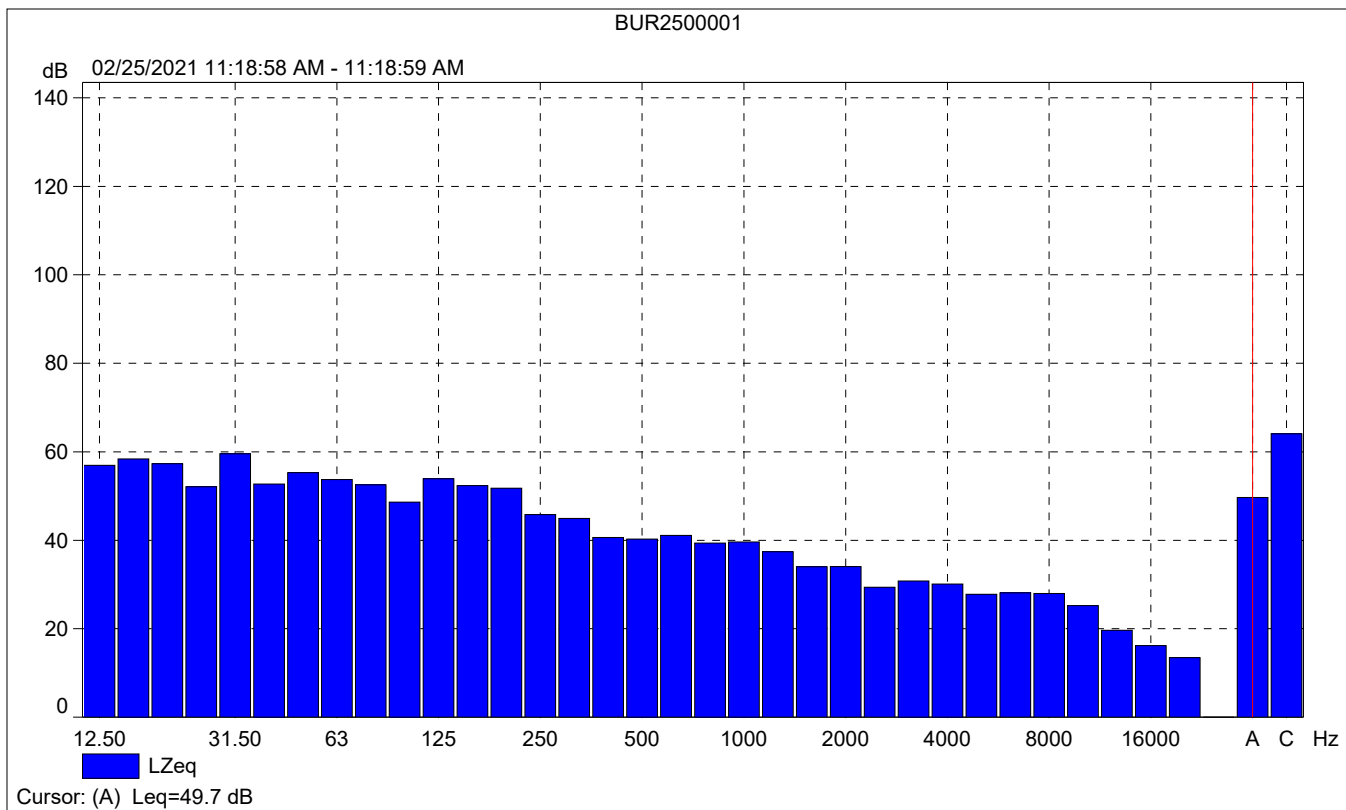
	Start time	End time	Elapsed time	Overload [%]	LAeq [dB]	LAFmax [dB]	LAFmin [dB]
Value				0.00	58.7	77.3	45.5
Time	11:13:59 AM	11:23:59 AM	0:10:00				
Date	02/25/2021	02/25/2021					





### BUR250001

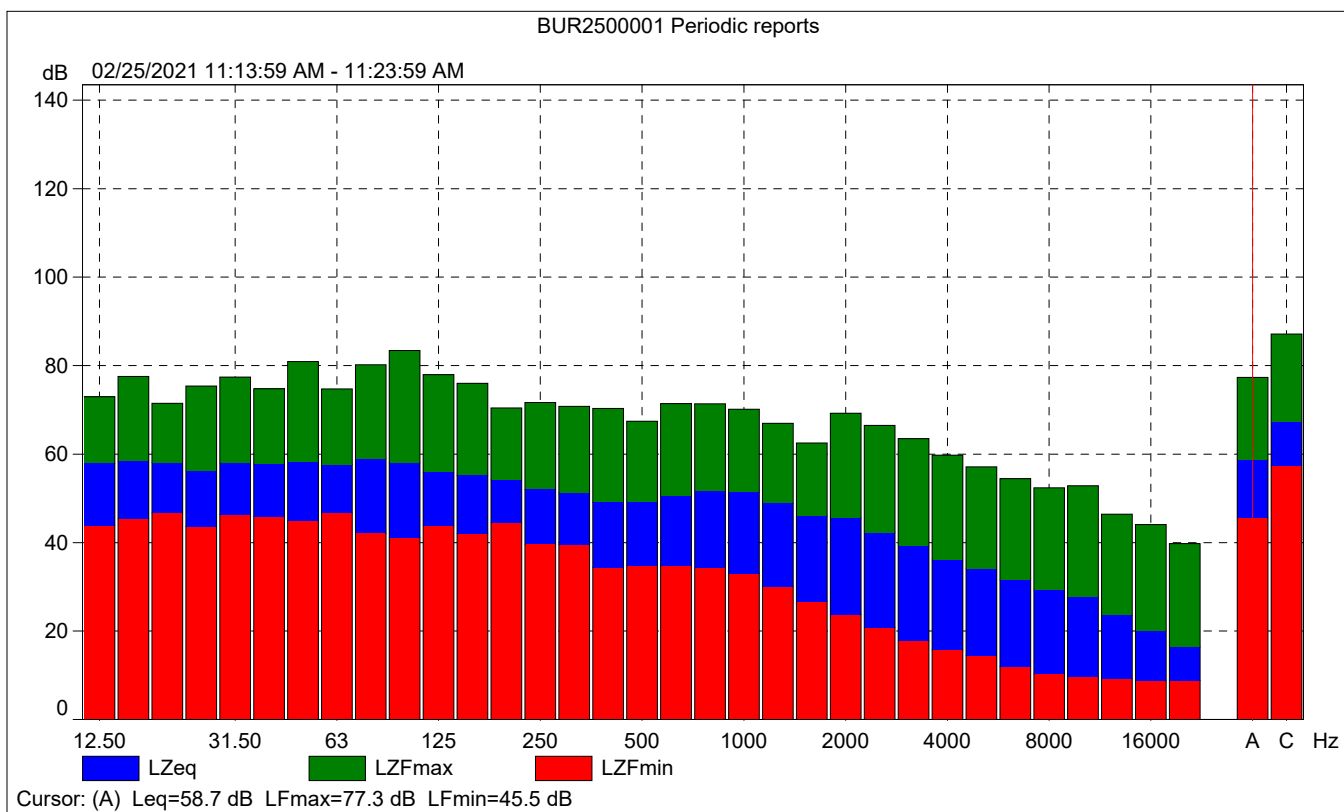
	Start time	Elapsed time	LAeq [dB]	LAFmax [dB]	LAFmin [dB]
Value			51.8	51.5	48.9
Time	11:18:58 AM	0:00:01			
Date	02/25/2021				





# BUR2500001 Periodic reports

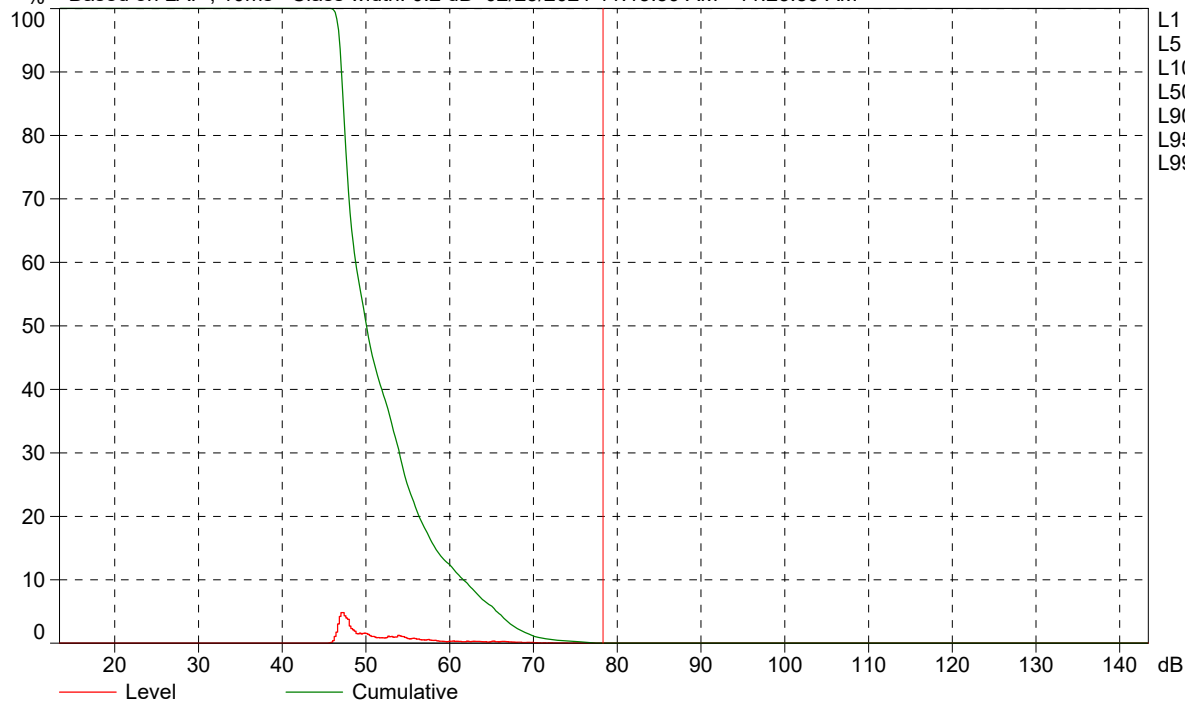
	Start time	Elapsed time	Overload [%]	LAFeq [dB]	LAFmax [dB]	LAFmin [dB]
Value			0.00	61.0	77.3	45.5
Time	11:13:59 AM	0:10:00				
Date	02/25/2021					





BUR2500001 Periodic reports

% Based on LAF, 10ms Class width: 0.2 dB 02/25/2021 11:13:59 AM - 11:23:59 AM



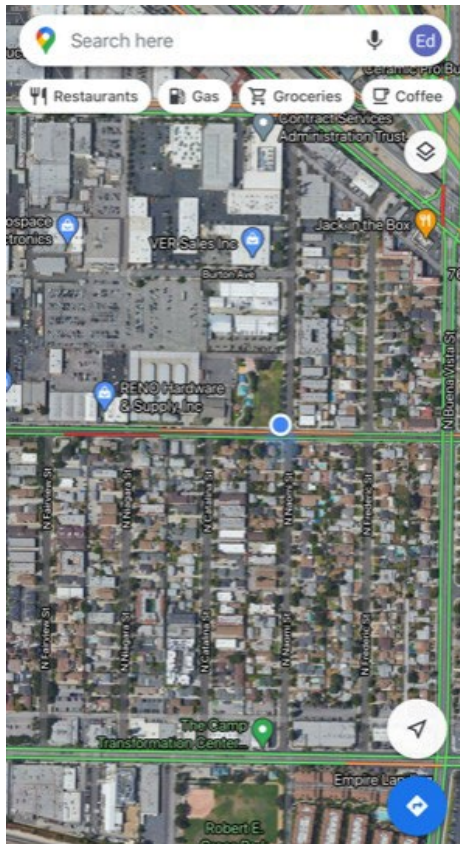
Cursor: [78.2 ; 78.4] dB Level: 0.0% Cumulative: 0.0%



<b>Site Number:</b> 2
<b>Recorded By:</b> Eddie Torres
<b>Job Number:</b> 180918
<b>Date:</b> 2/25/21
<b>Time:</b> 11:32 am
<b>Location:</b> Robert E. Lundigan Park (i.e. northwest corner of Thornton Avenue and Naomi Street)
<b>Source of Peak Noise:</b> traffic noise

Equipment						
Category	Type	Vendor	Model	Serial No.	Cert. Date	Note
Sound	Sound Level Meter	Brüel & Kjær	2250	3011133	04/08/2019	
	Microphone	Brüel & Kjær	4189	3086765	04/08/2019	
	Preamp	Brüel & Kjær	ZC 0032	25380	04/08/2019	
	Calibrator	Brüel & Kjær	4231	2545667	04/08/2019	
Weather Data						
Est.	Duration: 10 minutes			Sky: Clear		
	Note: dBA Offset = 0.01			Sensor Height (ft): 5 ft		
	Wind Ave Speed (mph / m/s)		Temperature (degrees Fahrenheit)		Barometer Pressure (inches)	
	1.8		73.6		27.1	

**Photo of Measurement Location**



2250

Instrument:		2250
Application:		BZ7225 Version 4.7.4
Start Time:		02/25/2021 11:32:25
End Time:		02/25/2021 11:42:25
Elapsed Time:		00:10:00
Bandwidth:		1/3-octave
Max Input Level:		142.17

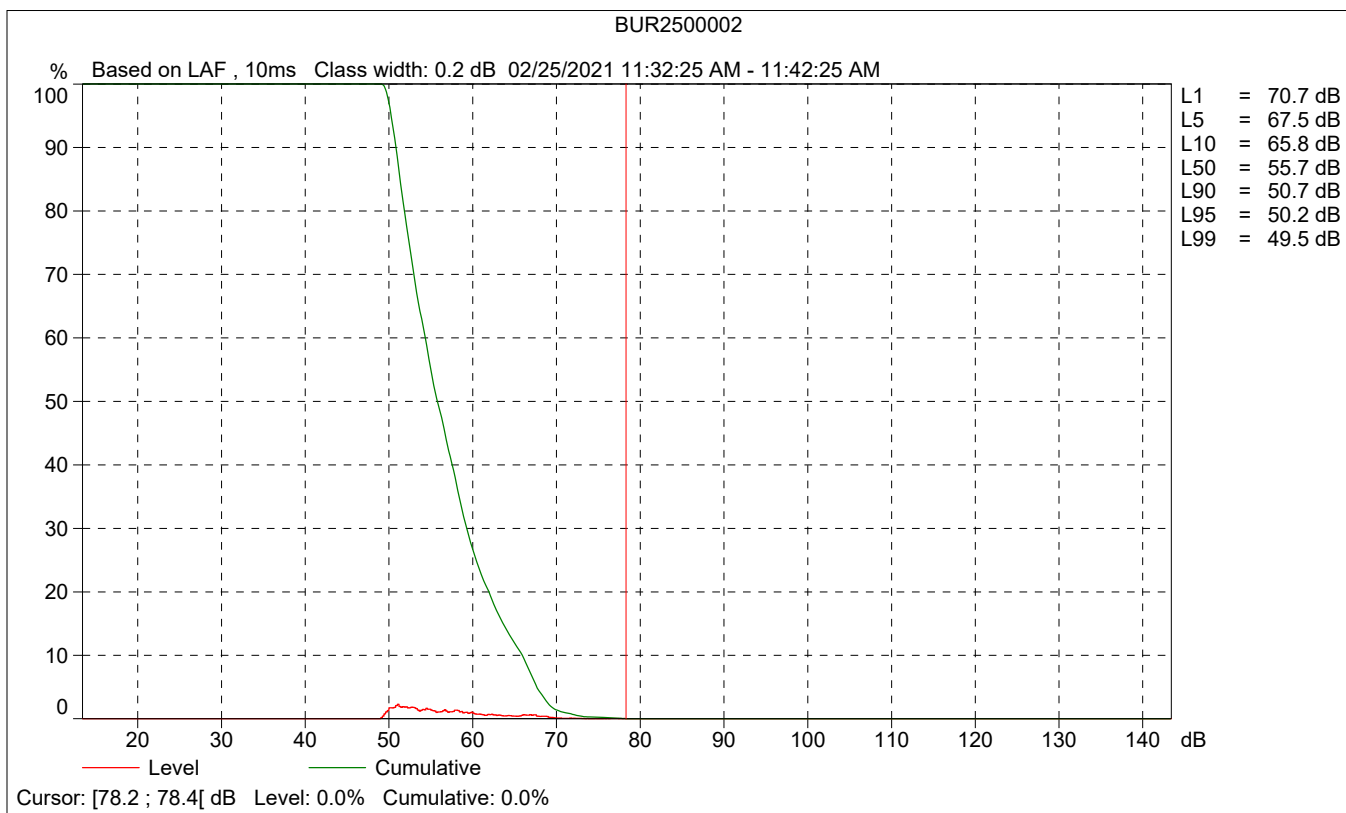
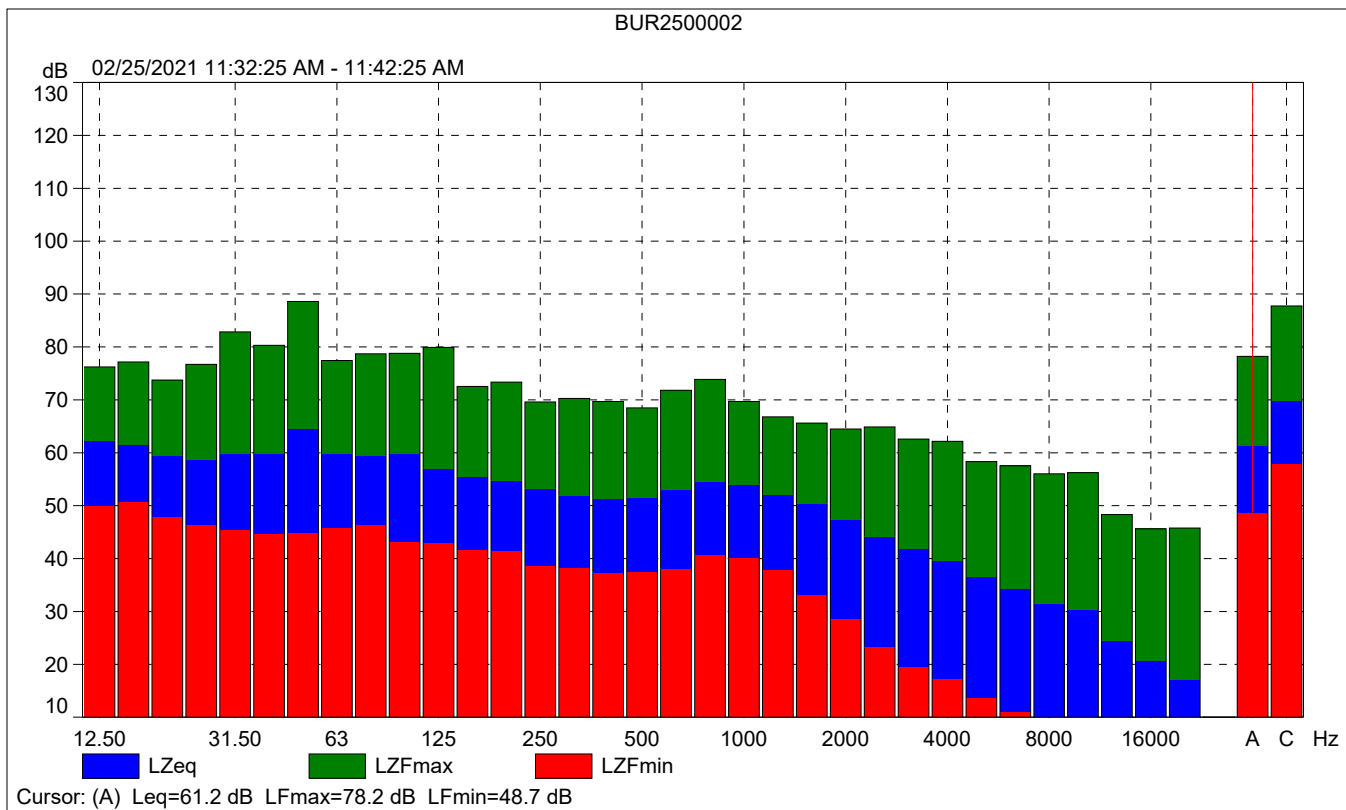
	Time	Frequency
Broadband (excl. Peak):	FSI	AC
Broadband Peak:		C
Spectrum:	FS	Z

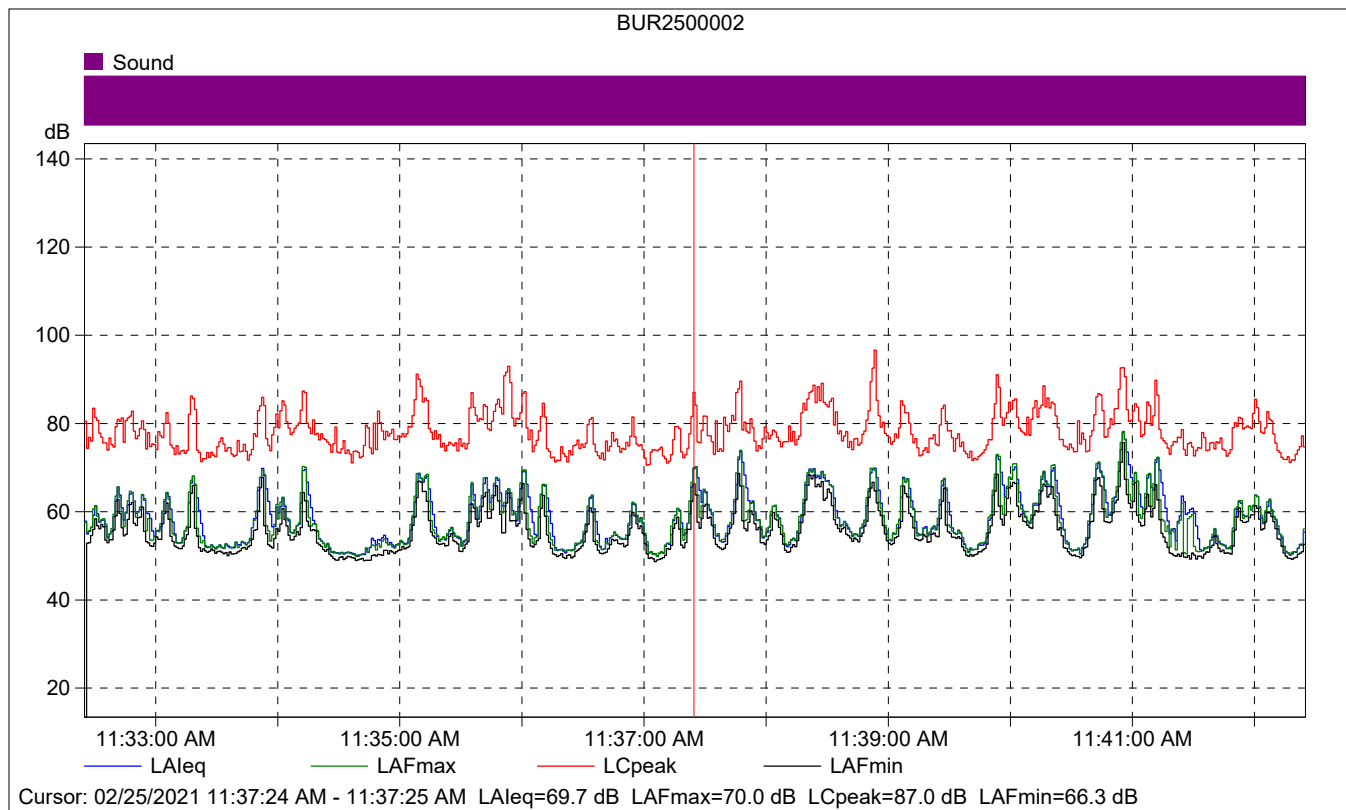
Instrument Serial Number:		3011133
Microphone Serial Number:		3086765
Input:		Top Socket
Windscreen Correction:		UA-1650
Sound Field Correction:		Free-field

Calibration Time:		01/14/2021 08:34:02
Calibration Type:		External reference
Sensitivity:		43.354082852602 mV/Pa

BUR2500002

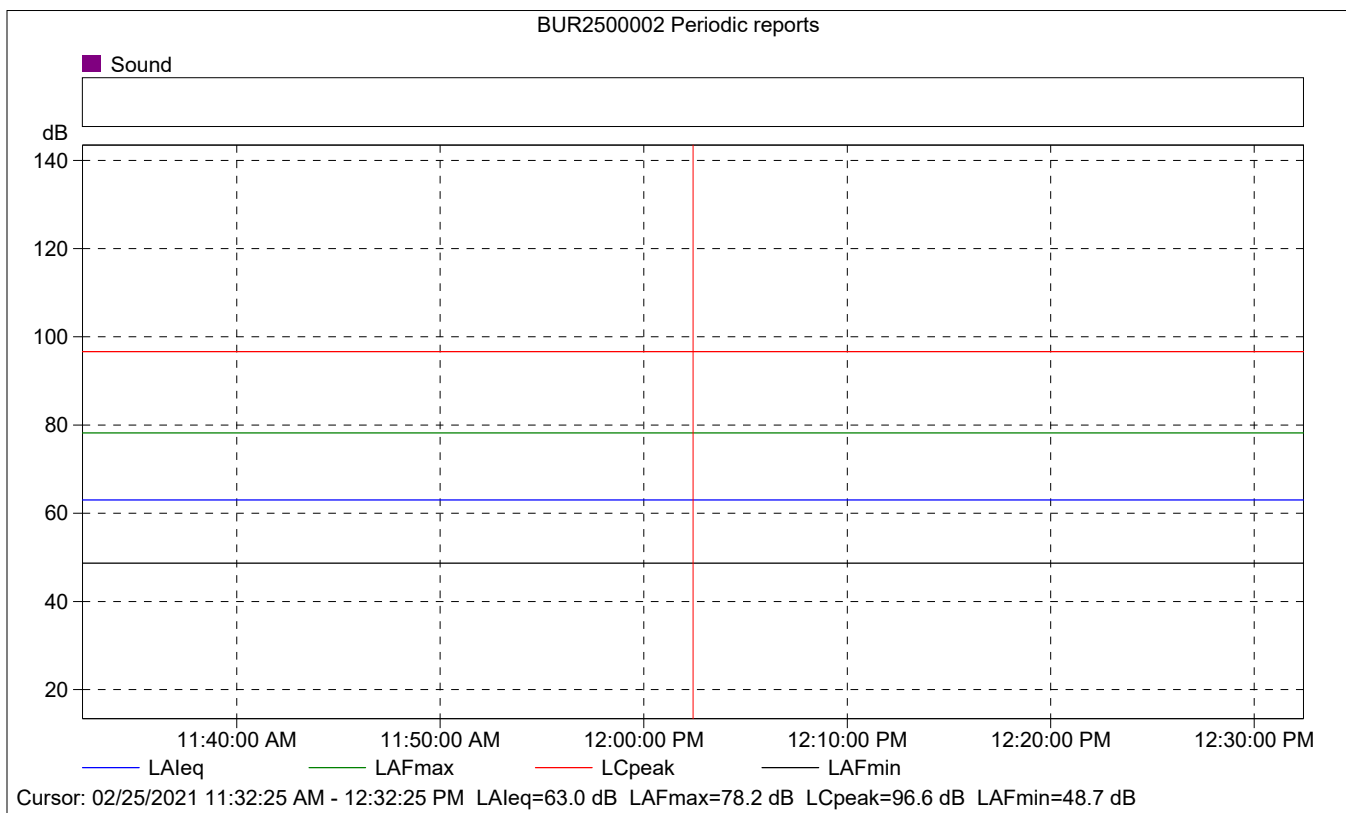
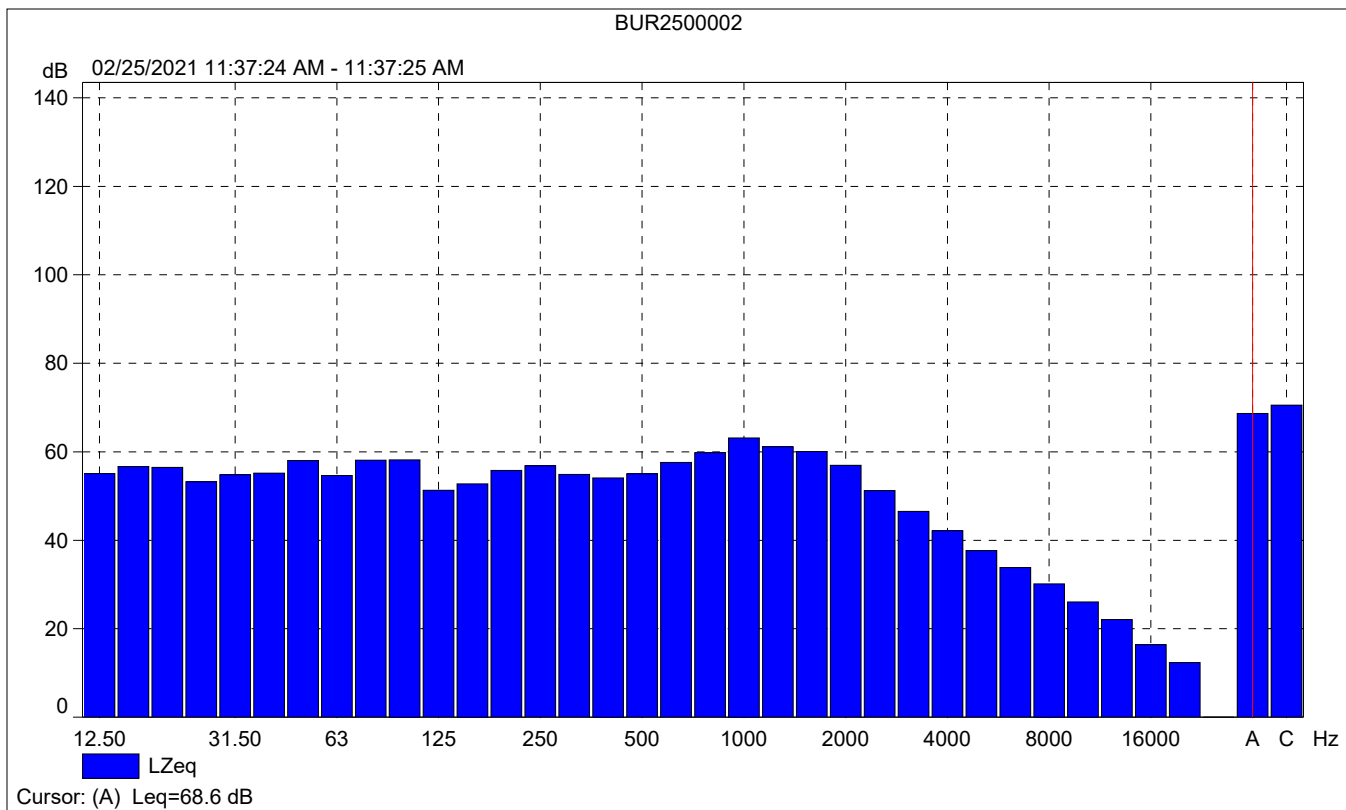
	Start time	End time	Elapsed time	Overload [%]	LAeq [dB]	LAFmax [dB]	LAFmin [dB]
Value				0.00	61.2	78.2	48.7
Time	11:32:25 AM	11:42:25 AM	0:10:00				
Date	02/25/2021	02/25/2021					





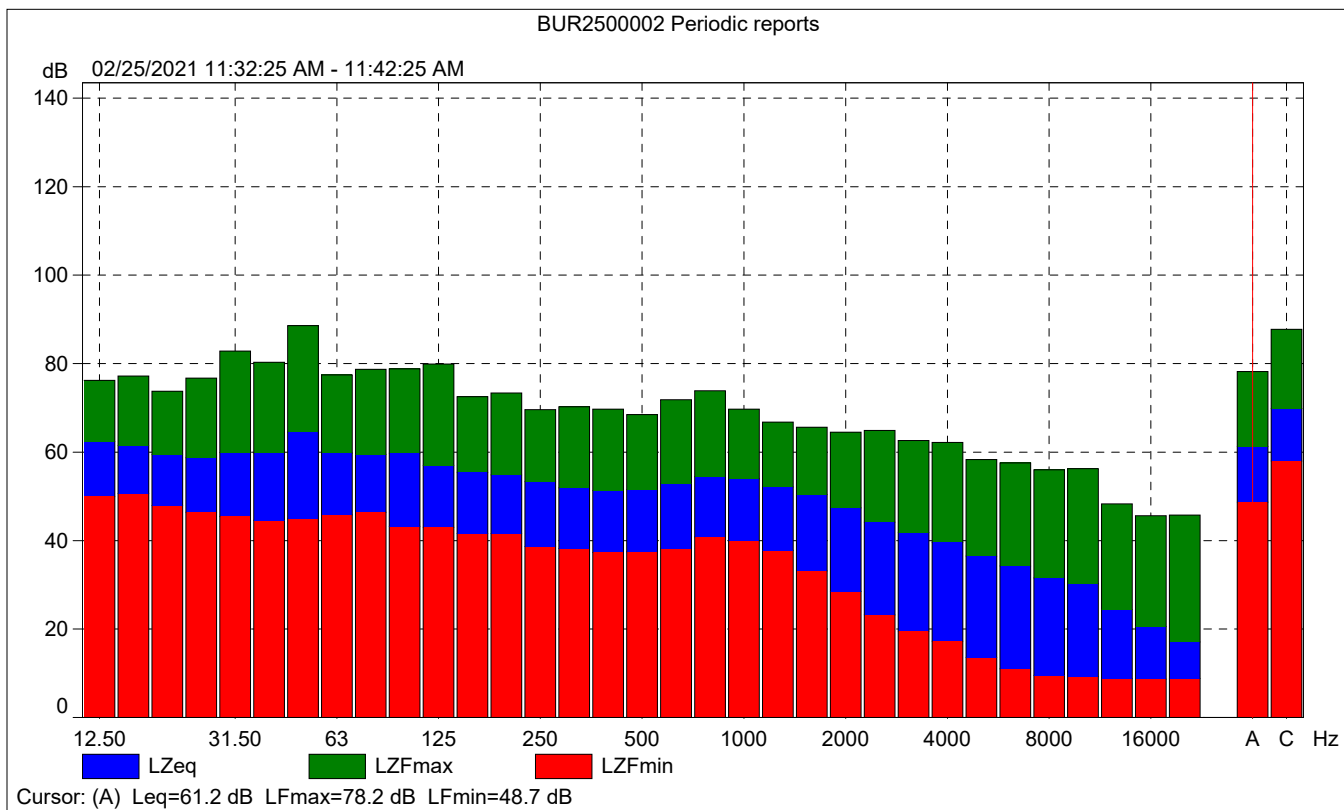
BUR2500002

	Start time	Elapsed time	LAeq [dB]	LAFmax [dB]	LAFmin [dB]
Value			69.7	70.0	66.3
Time	11:37:24 AM	0:00:01			
Date	02/25/2021				



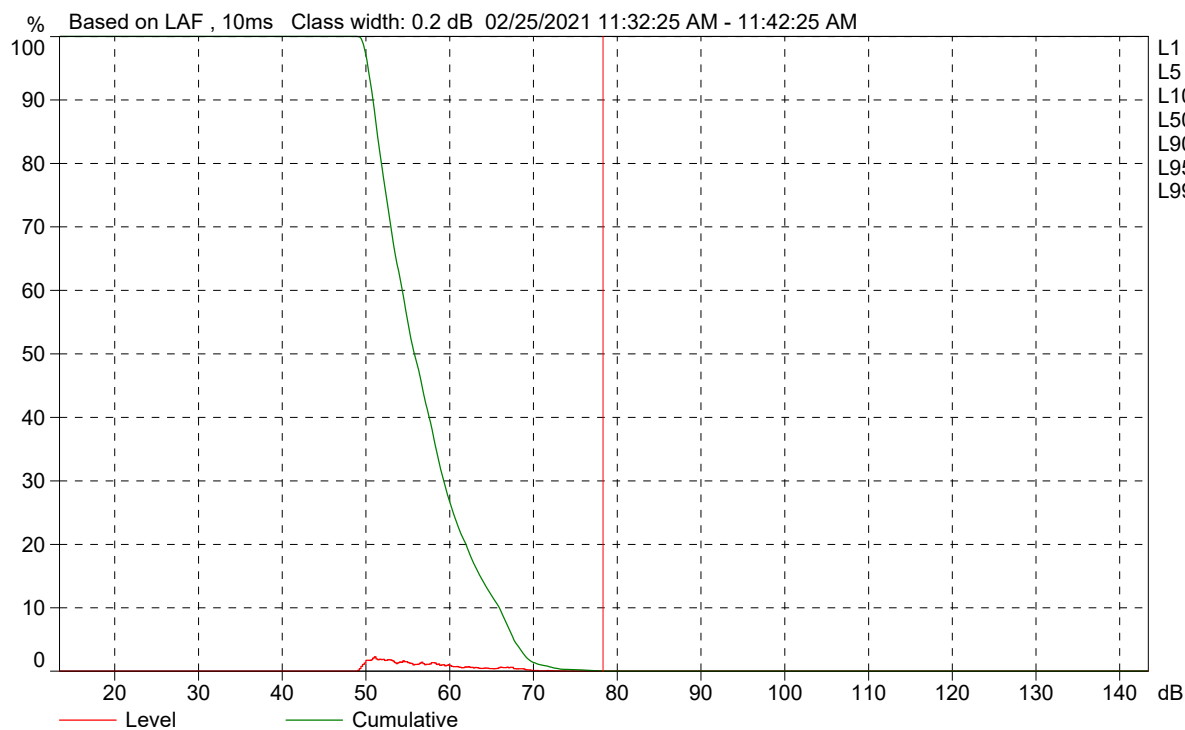
# BUR2500002 Periodic reports

	Start time	Elapsed time	Overload [%]	LALeq [dB]	LAFmax [dB]	LAFmin [dB]
Value			0.00	63.0	78.2	48.7
Time	11:32:25 AM	0:10:00				
Date	02/25/2021					





BUR2500002 Periodic reports



- L1 = 70.7 dB
- L5 = 67.5 dB
- L10 = 65.8 dB
- L50 = 55.7 dB
- L90 = 50.7 dB
- L95 = 50.2 dB
- L99 = 49.5 dB

Cursor: [78.2 ; 78.4] dB Level: 0.0% Cumulative: 0.0%

Roadway Construction Noise Model (RCNM),Version 1.1

Report date: #####

Case Descr Demolition

---- Receptor #1 ----

Baselines (dBA)

Descriptor Land Use	Daytime	Evening	Night
Single Fam Residential	85	85	85

Equipment

Description	Impact Device	Usage(%)	Spec	Actual	Receptor	Estimated
			Lmax (dBA)	Lmax (dBA)	Distance (feet)	Shielding (dBA)
Dozer	No	40		81.7	360	0
Dozer	No	40		81.7	360	0
Excavator	No	40		80.7	360	0
Excavator	No	40		80.7	360	0
Excavator	No	40		80.7	360	0
Concrete Saw	No	20		89.6	360	0

Results

Equipment	Calculated (dBA)			Noise Limits (dBA)				
	*Lmax	Leq	Day	Leq	Evening		Night	
			Lmax		Lmax	Leq	Lmax	Leq
Dozer	64.5	60.5	N/A	N/A	N/A	N/A	N/A	N/A
Dozer	64.5	60.5	N/A	N/A	N/A	N/A	N/A	N/A
Excavator	63.6	59.6	N/A	N/A	N/A	N/A	N/A	N/A
Excavator	63.6	59.6	N/A	N/A	N/A	N/A	N/A	N/A
Excavator	63.6	59.6	N/A	N/A	N/A	N/A	N/A	N/A
Concrete Saw	72.4	65.4	N/A	N/A	N/A	N/A	N/A	N/A
Total	72.4	69.3	N/A	N/A	N/A	N/A	N/A	N/A

\*Calculated Lmax is the Loudest value.





Roadway Construction Noise Model (RCNM),Version 1.1

Report date: #####

Case Descr Grading

---- Receptor #1 ----

Baselines (dBA)

Descriptor	Land Use	Daytime	Evening	Night
Single Fam Residential		85	85	85

Equipment

Description	Impact Device	Usage(%)	Spec	Actual	Receptor	Estimated
			Lmax (dBA)	Lmax (dBA)	Distance (feet)	Shielding (dBA)
Grader	No	40	85		360	0
Excavator	No	40		80.7	360	0
Excavator	No	40		80.7	360	0
Tractor	No	40	84		360	0
Tractor	No	40	84		360	0
Scraper	No	40		83.6	360	0
Scraper	No	40		83.6	360	0
Dozer	No	40		81.7	360	0

Results

Equipment	Calculated (dBA)			Noise Limits (dBA)					
	*Lmax	Leq	Day	Evening		Night		Leq	
			Lmax	Leq	Lmax	Leq	Lmax		Leq
Grader	67.9	63.9	N/A	N/A	N/A	N/A	N/A	N/A	N/A
Excavator	63.6	59.6	N/A	N/A	N/A	N/A	N/A	N/A	N/A
Excavator	63.6	59.6	N/A	N/A	N/A	N/A	N/A	N/A	N/A
Tractor	66.9	62.9	N/A	N/A	N/A	N/A	N/A	N/A	N/A
Tractor	66.9	62.9	N/A	N/A	N/A	N/A	N/A	N/A	N/A
Scraper	66.4	62.5	N/A	N/A	N/A	N/A	N/A	N/A	N/A
Scraper	66.4	62.5	N/A	N/A	N/A	N/A	N/A	N/A	N/A
Dozer	64.5	60.5	N/A	N/A	N/A	N/A	N/A	N/A	N/A
Total	67.9	71.1	N/A	N/A	N/A	N/A	N/A	N/A	N/A

\*Calculated Lmax is the Loudest value.



Roadway Construction Noise Model (RCNM),Version 1.1

Report date: #####

Case Descr Construction

---- Receptor #1 ----

Baselines (dBA)

Descriptor Land Use	Daytime	Evening	Night
Single Fam Residential	85	85	85

Equipment

Description	Impact Device	Usage(%)	Spec	Actual	Receptor	Estimated
			Lmax (dBA)	Lmax (dBA)	Distance (feet)	Shielding (dBA)
Pickup Truck	No	40		75	360	0
Pickup Truck	No	40		75	360	0
Pickup Truck	No	40		75	360	0
Generator	No	50		80.6	360	0
Crane	No	16		80.6	360	0
Welder / Torch	No	40		74	360	0
Tractor	No	40	84		360	0
Tractor	No	40	84		360	0
Tractor	No	40	84		360	0

Results

Equipment	Calculated (dBA)			Noise Limits (dBA)					
	*Lmax	Leq	Day	Evening		Night		Leq	
			Lmax	Leq	Lmax	Leq	Lmax		Leq
Pickup Truck	57.9	53.9	N/A	N/A	N/A	N/A	N/A	N/A	N/A
Pickup Truck	57.9	53.9	N/A	N/A	N/A	N/A	N/A	N/A	N/A
Pickup Truck	57.9	53.9	N/A	N/A	N/A	N/A	N/A	N/A	N/A
Generator	63.5	60.5	N/A	N/A	N/A	N/A	N/A	N/A	N/A
Crane	63.4	55.4	N/A	N/A	N/A	N/A	N/A	N/A	N/A
Welder / Torch	56.9	52.9	N/A	N/A	N/A	N/A	N/A	N/A	N/A
Tractor	66.9	62.9	N/A	N/A	N/A	N/A	N/A	N/A	N/A
Tractor	66.9	62.9	N/A	N/A	N/A	N/A	N/A	N/A	N/A
Tractor	66.9	62.9	N/A	N/A	N/A	N/A	N/A	N/A	N/A
Total	66.9	69.1	N/A	N/A	N/A	N/A	N/A	N/A	N/A

\*Calculated Lmax is the Loudest value.



Roadway Construction Noise Model (RCNM),Version 1.1

Report date: #####

Case Descr Paving

---- Receptor #1 ----

Baselines (dBA)

Descriptor Land Use	Daytime	Evening	Night
Single Fam Residential	85	85	85

Equipment

Description	Impact Device	Usage(%)	Spec	Actual	Receptor	Estimated
			Lmax (dBA)	Lmax (dBA)	Distance (feet)	Shielding (dBA)
Paver	No	50		77.2	360	0
Paver	No	50		77.2	360	0
Roller	No	20		80	360	0
Roller	No	20		80	360	0
Roller	No	20		80	360	0
Roller	No	20		80	360	0

Results

Equipment	Calculated (dBA)			Noise Limits (dBA)					
	*Lmax	Leq	Day	Leq	Evening		Night		
			Lmax		Lmax	Leq	Lmax	Leq	
Paver	60.1	57.1	N/A	N/A	N/A	N/A	N/A	N/A	
Paver	60.1	57.1	N/A	N/A	N/A	N/A	N/A	N/A	
Roller	62.9	55.9	N/A	N/A	N/A	N/A	N/A	N/A	
Roller	62.9	55.9	N/A	N/A	N/A	N/A	N/A	N/A	
Roller	62.9	55.9	N/A	N/A	N/A	N/A	N/A	N/A	
Roller	62.9	55.9	N/A	N/A	N/A	N/A	N/A	N/A	
Total	62.9	64.1	N/A	N/A	N/A	N/A	N/A	N/A	

\*Calculated Lmax is the Loudest value.



Roadway Construction Noise Model (RCNM),Version 1.1

Report date #####

Case Descr Coating

---- Receptor #1 ----

Baselines (dBA)

Descriptor Land Use	Daytime	Evening	Night
Single Fam Residential	85	85	85

Equipment

Description	Impact Device	Usage(%)	Spec	Actual	Receptor	Estimated
			Lmax (dBA)	Lmax (dBA)	Distance (feet)	Shielding (dBA)
Compressor (air)	No	40		77.7	360	0

Results

Equipment	Calculated (dBA)			Noise Limits (dBA)					
			Day	Evening		Night			
	*Lmax	Leq	Lmax	Leq	Lmax	Leq	Lmax	Leq	
Compressor (air)	60.5	56.5	N/A	N/A	N/A	N/A	N/A	N/A	N/A
Total	60.5	56.5	N/A	N/A	N/A	N/A	N/A	N/A	N/A

\*Calculated Lmax is the Loudest value.



Noise Limit Exceedance (dBA)

Day	Evening		Night		
Lmax	Leq	Lmax	Leq	Lmax	Leq
N/A	N/A	N/A	N/A	N/A	N/A
N/A	N/A	N/A	N/A	N/A	N/A

Roadway Construction Noise Model (RCNM),Version 1.1

Report date: #####

Case Descr Demolition

---- Receptor #1 ----

Baselines (dBA)

Descriptor Land Use	Daytime	Evening	Night
Single Fam Residential	85	85	85

Equipment

Description	Impact Device	Usage(%)	Spec	Actual	Receptor	Estimated
			Lmax (dBA)	Lmax (dBA)	Distance (feet)	Shielding (dBA)
Dozer	No	40		81.7	640	0
Dozer	No	40		81.7	640	0
Excavator	No	40		80.7	640	0
Excavator	No	40		80.7	640	0
Excavator	No	40		80.7	640	0
Concrete Saw	No	20		89.6	640	0

Results

Equipment	Calculated (dBA)			Noise Limits (dBA)				
	*Lmax	Leq	Day	Leq	Evening		Night	
			Lmax		Lmax	Leq	Lmax	Leq
Dozer	59.5	55.5	N/A	N/A	N/A	N/A	N/A	N/A
Dozer	59.5	55.5	N/A	N/A	N/A	N/A	N/A	N/A
Excavator	58.6	54.6	N/A	N/A	N/A	N/A	N/A	N/A
Excavator	58.6	54.6	N/A	N/A	N/A	N/A	N/A	N/A
Excavator	58.6	54.6	N/A	N/A	N/A	N/A	N/A	N/A
Concrete Saw	67.4	60.4	N/A	N/A	N/A	N/A	N/A	N/A
Total	67.4	64.3	N/A	N/A	N/A	N/A	N/A	N/A

\*Calculated Lmax is the Loudest value.



Roadway Construction Noise Model (RCNM),Version 1.1

Report date: #####

Case Descr Grading

---- Receptor #1 ----

Descriptor Land Use	Baselines (dBA)		
	Daytime	Evening	Night
Single Fam Residential	85	85	85

Description	Impact Device	Usage(%)	Equipment			
			Spec Lmax (dBA)	Actual Lmax (dBA)	Receptor Distance (feet)	Estimated Shielding (dBA)
Grader	No	40	85		640	0
Excavator	No	40		80.7	640	0
Excavator	No	40		80.7	640	0
Tractor	No	40	84		640	0
Tractor	No	40	84		640	0
Scraper	No	40		83.6	640	0
Scraper	No	40		83.6	640	0
Dozer	No	40		81.7	640	0

Results

Equipment	Calculated (dBA)			Noise Limits (dBA)			
	*Lmax	Leq	Day Lmax	Leq	Evening Lmax	Leq	Night Lmax
Grader	62.9	58.9	N/A	N/A	N/A	N/A	N/A
Excavator	58.6	54.6	N/A	N/A	N/A	N/A	N/A
Excavator	58.6	54.6	N/A	N/A	N/A	N/A	N/A
Tractor	61.9	57.9	N/A	N/A	N/A	N/A	N/A
Tractor	61.9	57.9	N/A	N/A	N/A	N/A	N/A
Scraper	61.4	57.5	N/A	N/A	N/A	N/A	N/A
Scraper	61.4	57.5	N/A	N/A	N/A	N/A	N/A
Dozer	59.5	55.5	N/A	N/A	N/A	N/A	N/A
Total	62.9	66.1	N/A	N/A	N/A	N/A	N/A

\*Calculated Lmax is the Loudest value.



Roadway Construction Noise Model (RCNM),Version 1.1

Report date #####  
Case Descr Construction

---- Receptor #1 ----

Baselines (dBA)

Descriptor Land Use	Daytime	Evening	Night
Single Fam Residential	85	85	85

Equipment

Description	Impact Device	Usage(%)	Spec	Actual	Receptor	Estimated
			Lmax (dBA)	Lmax (dBA)	Distance (feet)	Shielding (dBA)
Pickup Truck	No	40		75	640	0
Pickup Truck	No	40		75	640	0
Pickup Truck	No	40		75	640	0
Generator	No	50		80.6	640	0
Crane	No	16		80.6	640	0
Welder / Torch	No	40		74	640	0
Tractor	No	40	84		640	0
Tractor	No	40	84		640	0
Tractor	No	40	84		640	0

Results

Equipment	Calculated (dBA)			Noise Limits (dBA)				
	*Lmax	Leq	Day	Leq	Evening		Night	
			Lmax		Lmax	Leq	Lmax	Leq
Pickup Truck	52.9	48.9	N/A	N/A	N/A	N/A	N/A	N/A
Pickup Truck	52.9	48.9	N/A	N/A	N/A	N/A	N/A	N/A
Pickup Truck	52.9	48.9	N/A	N/A	N/A	N/A	N/A	N/A
Generator	58.5	55.5	N/A	N/A	N/A	N/A	N/A	N/A
Crane	58.4	50.4	N/A	N/A	N/A	N/A	N/A	N/A
Welder / Torch	51.9	47.9	N/A	N/A	N/A	N/A	N/A	N/A
Tractor	61.9	57.9	N/A	N/A	N/A	N/A	N/A	N/A
Tractor	61.9	57.9	N/A	N/A	N/A	N/A	N/A	N/A
Tractor	61.9	57.9	N/A	N/A	N/A	N/A	N/A	N/A
Total	61.9	64.1	N/A	N/A	N/A	N/A	N/A	N/A

\*Calculated Lmax is the Loudest value.



Roadway Construction Noise Model (RCNM),Version 1.1

Report date: #####

Case Descr Paving

---- Receptor #1 ----

Baselines (dBA)

Descriptor Land Use	Daytime	Evening	Night
Single Fam Residential	85	85	85

Equipment

Description	Impact Device	Usage(%)	Spec	Actual	Receptor	Estimated
			Lmax (dBA)	Lmax (dBA)	Distance (feet)	Shielding (dBA)
Paver	No	50		77.2	640	0
Paver	No	50		77.2	640	0
Roller	No	20		80	640	0
Roller	No	20		80	640	0
Roller	No	20		80	640	0
Roller	No	20		80	640	0

Results

Equipment	Calculated (dBA)			Noise Limits (dBA)					
	*Lmax	Leq	Lmax	Day		Evening		Night	
				Lmax	Leq	Lmax	Leq	Lmax	Leq
Paver	55.1	52.1	N/A	N/A	N/A	N/A	N/A	N/A	N/A
Paver	55.1	52.1	N/A	N/A	N/A	N/A	N/A	N/A	N/A
Roller	57.9	50.9	N/A	N/A	N/A	N/A	N/A	N/A	N/A
Roller	57.9	50.9	N/A	N/A	N/A	N/A	N/A	N/A	N/A
Roller	57.9	50.9	N/A	N/A	N/A	N/A	N/A	N/A	N/A
Roller	57.9	50.9	N/A	N/A	N/A	N/A	N/A	N/A	N/A
Total	57.9	59.1	N/A	N/A	N/A	N/A	N/A	N/A	N/A

\*Calculated Lmax is the Loudest value.





Roadway Construction Noise Model (RCNM), Version 1.1

Report date: #####

Case Description: Coating

---- Receptor #1 ----

Baselines (dBA)

Descriptor	Land Use	Daytime	Evening	Night
Single Fam Residential		85	85	85

Equipment

Description	Impact Device	Usage(%)	Spec	Actual	Receptor	Estimated
			Lmax (dBA)	Lmax (dBA)	Distance (feet)	Shielding (dBA)
Compressor (air)	No	40		77.7	640	0

Results

Equipment	Calculated (dBA)			Noise Limits (dBA)					
	*Lmax	Leq	Lmax	Day		Evening		Night	
				Lmax	Leq	Lmax	Leq	Lmax	Leq
Compressor (air)	55.5	51.5	N/A	N/A	N/A	N/A	N/A	N/A	N/A
Total	55.5	51.5	N/A	N/A	N/A	N/A	N/A	N/A	N/A

\*Calculated Lmax is the Loudest value.

Noise Limit Exceedance (dBA)

Day	Evening		Night	
	Lmax	Leq	Lmax	Leq
N/A	N/A	N/A	N/A	N/A
N/A	N/A	N/A	N/A	N/A

Roadway Construction Noise Model (RCNM),Version 1.1

Report date #####

Case Description Sewer Improvement

---- Receptor #1 ----

		Baselines (dBA)		
Descriptor	Land Use	Daytime	Evening	Night
Single Family Residential		85	85	85

Description	Impact Device	Usage(%)	Equipment		Receptor Distance (feet)	Estimated Shielding (dBA)
			Spec Lmax (dBA)	Actual Lmax (dBA)		
Grader	No	40	85	85	45	0
Excavator	No	40		80.7	45	0
Tractor	No	40	84		45	0
Scraper	No	40		83.6	45	0
Dozer	No	40		81.7	45	0
Roller	No	20		80	45	0

Equipment	Calculated (dBA)		Noise Limits (dBA)						Noise Limit Exceedance (dBA)					
	*Lmax	Leq	Day		Evening		Night		Day		Evening		Night	
			Lmax	Leq	Lmax	Leq	Lmax	Leq	Lmax	Leq	Lmax	Leq	Lmax	Leq
Grader	85.9	81.9	N/A	N/A	N/A	N/A	N/A	N/A	N/A	N/A	N/A	N/A	N/A	N/A
Excavator	81.6	77.6	N/A	N/A	N/A	N/A	N/A	N/A	N/A	N/A	N/A	N/A	N/A	N/A
Tractor	84.9	80.9	N/A	N/A	N/A	N/A	N/A	N/A	N/A	N/A	N/A	N/A	N/A	N/A
Scraper	84.5	80.5	N/A	N/A	N/A	N/A	N/A	N/A	N/A	N/A	N/A	N/A	N/A	N/A
Dozer	82.6	78.6	N/A	N/A	N/A	N/A	N/A	N/A	N/A	N/A	N/A	N/A	N/A	N/A
Roller	80.9	73.9	N/A	N/A	N/A	N/A	N/A	N/A	N/A	N/A	N/A	N/A	N/A	N/A
<b>Total</b>	<b>85.9</b>	<b>87.4</b>	<b>N/A</b>	<b>N/A</b>	<b>N/A</b>	<b>N/A</b>	<b>N/A</b>	<b>N/A</b>	<b>N/A</b>	<b>N/A</b>	<b>N/A</b>	<b>N/A</b>	<b>N/A</b>	<b>N/A</b>

\*Calculated Lmax is the Loudest value.